

From Sage MAS 90/200
to a
Financial Statement
in
5 easy steps

Geni Whitehouse, CPA.CITP



Geni Whitehouse, CPA.CITP, CSPM



- Former partner in Atlanta CPA firm
- Communication for accountants
- Frequent lecturer at CPA events around the country
- Former software company executive

Geni@EvenANerd.com



2

Agenda

- Client versus Accountant records
- Getting information from Sage MAS 90
- Getting information to CaseWare Working Papers
- Corrections and adjustments
- Winding up the engagement



3

Why do you need
electronic
working papers?

Accountant's Objective

To examine, verify, and document client
information in support of financial
statements

Working Papers – used in preparing

- Tax return
- Compilation/Review/Audit
- Consulting engagements – including month end closings

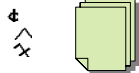
Information

Client Records
Operational

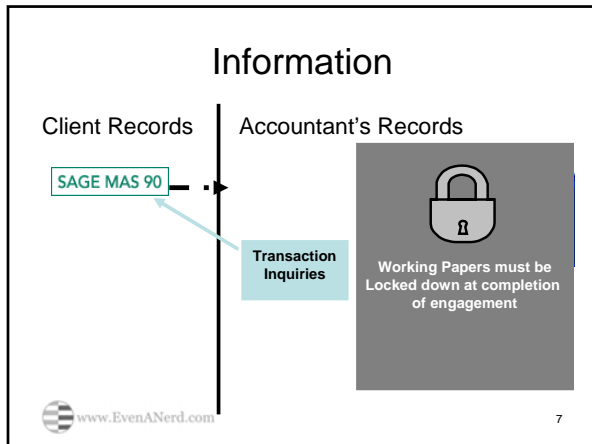


Read Only Access

Accountant's Records
Assurance, Presentational



Prepared by : SR 09/18/08



- ## The 5 Steps
1. Export from Sage MAS 90
 2. Import into CaseWare Working Papers
 3. Verify the data that is imported – check the mapping
 4. Enter adjusting entries
 5. Print financial statements
- www.EvenANerd.com

1. Create Sage MAS 90 Export Files

www.EvenANerd.com

Go to General Ledger

- Utilities
 - General Ledger Exchange
 - New exchange setting

 www.EvenANerd.com

SAGE MAS 90

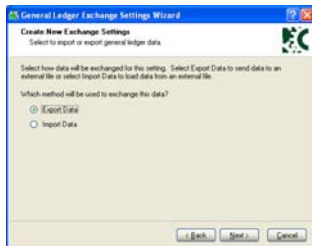
Launch a Wizard



 www.EvenANerd.com

SAGE MAS 90

Export From MAS90



 www.EvenANerd.com

SAGE MAS 90

1. First Export Activity



www.EvenANerd.com

SAGE MAS 90

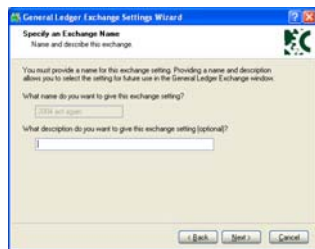
Enter the Year



www.EvenANerd.com

SAGE MAS 90

Name the export routine



www.EvenANerd.com

SAGE MAS 90

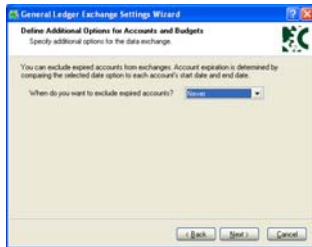
Select as desired



 www.EvenAnerd.com

SAGE MAS 90

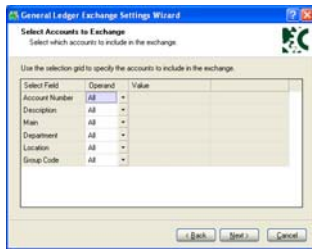
Exclude expired accounts



 www.EvenAnerd.com

SAGE MAS 90

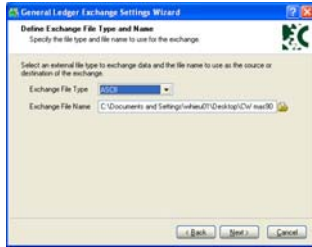
Include everything



 www.EvenAnerd.com

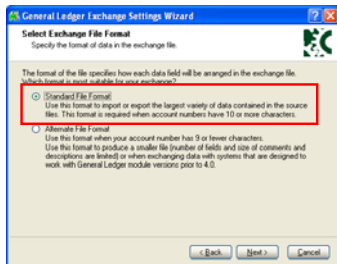
SAGE MAS 90

Create a file name



Filename = Year + Company + ACT

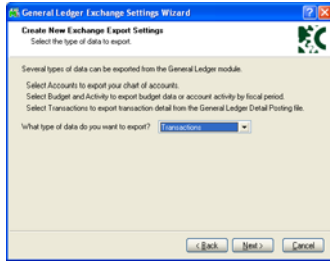
Be sure to select Standard



Finish



2. Export Transactions



www.EvenANerd.com

SAGE MAS 90

Name the export routine



www.EvenANerd.com

SAGE MAS 90

Select all



www.EvenANerd.com

SAGE MAS 90

Create a file



Filename = Year + Company + TRANS

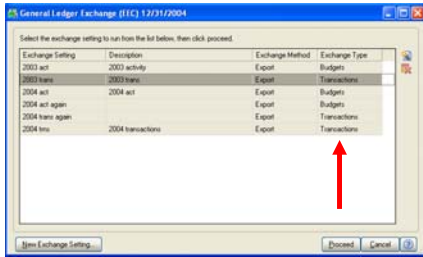
Select Standard File Format



Finish



Check types



www.EvenANerd.com

SAGE MAS 90

2. Import Into CaseWare Working Papers


www.EvenANerd.com

Create the working paper file





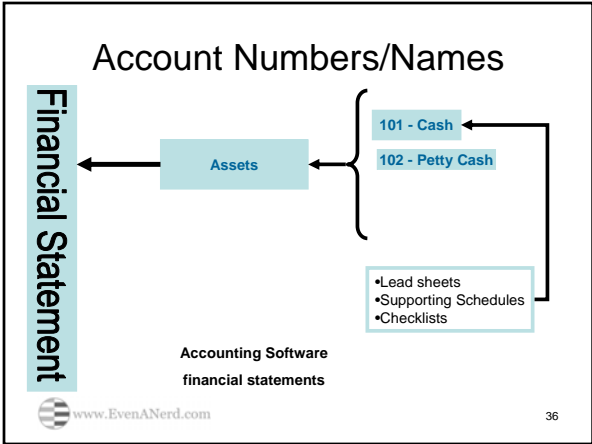
Point to file location

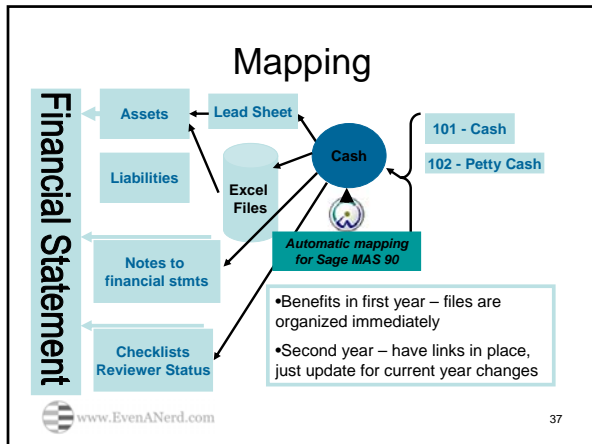
3.
Check the mapping

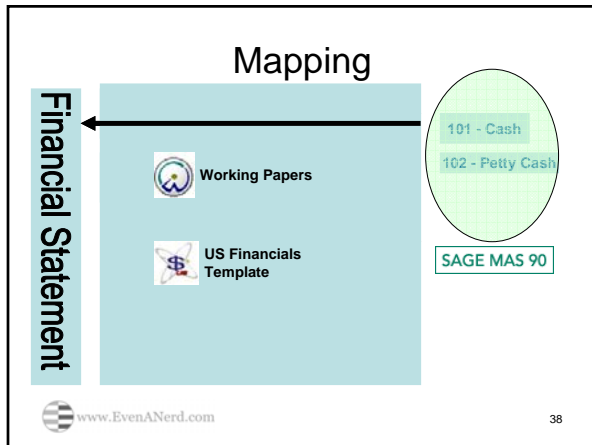


How
CaseWare
Working Papers
handles information





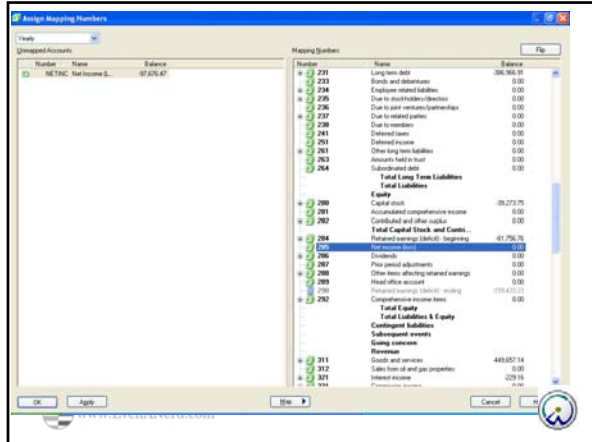




Check the mapping

- You will see a list of any unmapped items
- Drag to the appropriate mapping

www.EvenANerd.com



4.
 Make any
 adjustments needed

www.EvenANerd.com

5.
 Print Financial Statements

www.EvenANerd.com

First Year: Exporting from MAS 90

Current Year Activity
Current Year Transactions

Copy file SY0CTL.SOA to a directory called
SOA



Second Year

Export the activity and the
transaction files.



Role of CaseWare Working Papers

- Create the opinion letter
- Support for the conclusions drawn by the accountant
- Create notes to financial statements
- Manage the flow from preparer to reviewer
- Support for account balances
- Lock down and secure the working papers
- Centralize client files



Products shown

- MAS90 Version 4.2
- CaseWare Working Papers Version 2008
 - US Financials Template
 - Connector
 - Cost around \$800 for a single user version



CaseWare Working Papers

LICENSE PRICING

Working Papers

- Single user license \$499
- License for up to five users \$1399
- Additional users over five \$260 per user

Financials

- Single user license \$199
- License for up to five users \$599
- Additional users over five \$99 per user

Connector

- Single user license \$99
- License for up to five users \$299
- Additional users over five \$50 per user



Thank you!

Visit www.caseware.com/ssan for a special trial offer for SSAN members

Geni@evenanerd.com

925-202-1980

robert.seguin@caseware.com

1-800-267-1317 x280